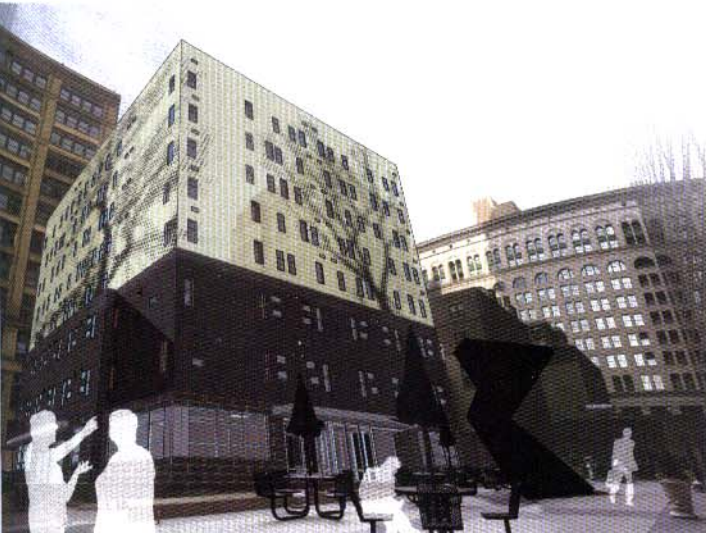


On The Boards



DLR Group Becker Winston

St. John the Evangelist House

DLR Group Becker Winston

A joint venture between two nonprofits that serve the needs of Philadelphia's homeless, DLR Group Becker Winston's St. John the Evangelist House is a 63,620-square-foot residential building with 79 units adjacent to the city's well-known Catholic church of the same name. The building's program has two distinct components: community room and offices for the Parish Center and residential units and community space for the two nonprofits, Project H.O.M.E. and Bethesda Project. The two will have separate entrances and are designed to operate independently. The exterior of the building will be adorned with a mural created by the project team and Philadelphia's Mural Arts Program. The mural – the panels of which will be fabricated off site – will occupy about 50 percent of the façade's surface area.

The Scott Arboretum Greenhouse and Education Center

Archer & Buchanan Architecture, Ltd.

In order to further its mission "for the encouragement of horticulture in its broadest sense" and to facilitate the task of maintaining Swarthmore College's reputation of having "the most beautiful college campus in America," The Scott Arboretum has determined that they are in critical need of a new facility. The existing 900-square-foot greenhouse will be replaced with a new 5,400-square-foot greenhouse and education center. The new facility will house a 1,800-square-foot production greenhouse, a 565-square-foot workroom and a 625-square-foot multipurpose room to support the arboretum's growing public programs. The building, located near one of the college's main entrances, is sited adjacent to the picturesque Victorian-styled Cunningham House (the Arboretum's headquarters) in a prominent and scenic landscaped environment.



Archer & Buchanan Architecture, Ltd.

Vorhees Town Center

BartonPartners, Inc.

On the decline for some time, the Echelon Mall in Vorhees, NJ, recently survived possible conversion to a Wal-Mart. The mall, owned since 2003 by the Pennsylvania Real Estate Investment Trust, is supporting BartonPartners' plan to convert the mall into an outdoor town center. The plan calls for a boulevard lined on both sides by luxury apartments, upscale shops, businesses and restaurants. The 1.1 million-square-foot mall would be reduced to about 660,000 square feet, while the town center would feature about 185,000 square feet of commercial space, an 8,000-square-foot clubhouse, and about 317 apartment units and 108 condominiums. Concerned about the possibilities of an influx of traffic and a burden on the school district, the plan is geared toward drawing the interest of young professionals and retired adults.



BartonPartners, Inc.